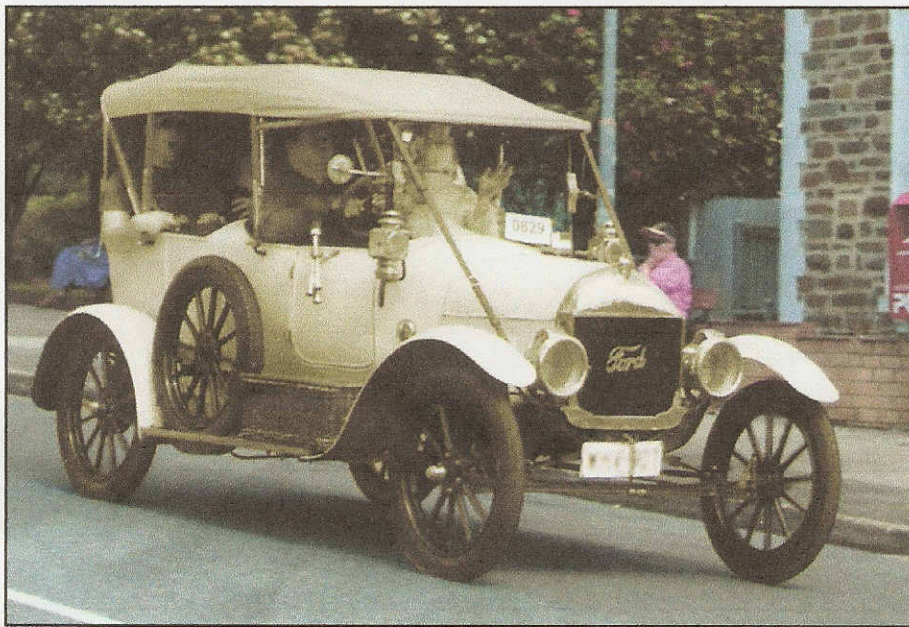


Bay to Birdwood

26th September 2010

Come and watch the vintage cars from the vantage position
of the **Gumeracha Hospital lawns**



Lunch Provided at 12 pm: BBQ + Salad & Dessert
BYO: Drinks & Chairs (Tea & Coffee provided)

Tickets:

Adults - \$13

Children - \$6



*The Gumeracha Hospital
Ladies Auxiliary*

Available from:

- Gumeracha Hospital administration office – 8209 9200
- Bru - 8389 1641
- Brenda - 8389 1010

Cars leave Glenelg at approximately 8am